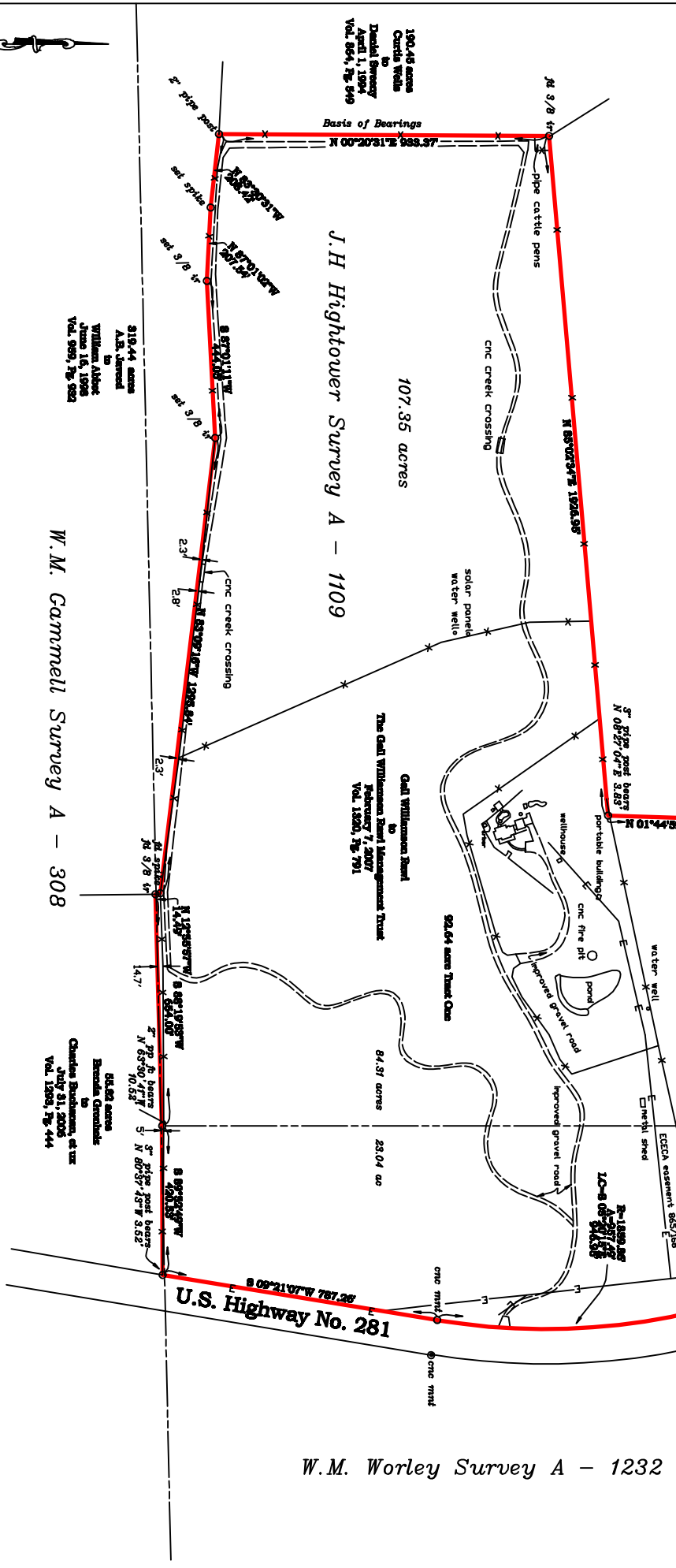


129.94 acre tract
 to
 Robert Herby
 June 15, 2001
 Vol. 1040, Pg. 388



190.48 acres
 Curdie Wells
 to
 Donald Seney
 April 1, 1994
 Vol. 864, Pg. 849

319.44 acres
 A.B. Jarred
 to
 William Albeck
 June 16, 1998
 Vol. 989, Pg. 922

The Gail Williams Trust
 to
 Management Trust
 Vol. 1520, Pg. 791

84.51 acres
 23.04 ac
 Charles Buchanan, et ux
 July 31, 2005
 Vol. 1282, Pg. 444

W.M. Worley Survey A - 1232



167.25 acres
 W.M. Worley Survey A - 1232
 J.H. Hightower Survey A - 1109
 Surveyed by
 W.M. Gamwell
 Surveyor

Notes: Measurements 829/213, 830/628 and
 830/975 on tax abate 688 track

W.M. Gamwell Survey A - 308

