

73+/- Ac, Equus Lake Village in Sout...

1201 McPherson Rd, Fort Worth, TX 76140



Presented By:
FirstLight Commercial Real Estate



73+/- Ac, Equus Lake Village in South FW

1201 Mcpherson Rd, Fort Worth, TX 76140

Property Details

73+/- Ac ready for development. Zoning in place includes Multi-Family, Single/duplex Residential & E Neighborhood Commercial with a 6 Acre Lake, Equus Lake Village. Gently sloping with trees around lake; fronts McPherson Rd just a few minutes from I35 and I20. Close to: Alcon, Miller Brewery, 6 million sq ft Majestic Office Warehouse project, Huguley Hospital, downtown Ft Worth and hospital district approx 15 min, 2 regional shopping malls and a major regional power center. Residential development adjoining on west, another developing adjoining east, park planned on east side adjoining by entrance, planned elementary school adjoins also on west side. Numerous business developments close by with employment opportunities. Road expansion planned. Excellent opportunity ready for development.

Price: \$2,575,000

- Excellent development opportunity for mixed uses including multi-family, single family including duplex and Commercial
- 6 Acre Lake on property
- Located at Intersection of 2 planned arterial roadways; very close to schools
- Located in sub-market area in major growth mode with Majestic Business Parks; Hillwood Business Park; Carter Business Park, etc
- Huge demand for workforce housing in this area due to major Industrial expansion
- Within 15 minutes of major shopping, downtown Fort Worth and hospital district

View the full listing here: <https://www.loopnet.com/Listing/1201-Mcpherson-Rd-Fort-Worth-TX/14978168/>

Price:	\$2,575,000
Property Type:	Land
Property Sub-type:	Commercial
Proposed Use:	Commercial
Sale Type:	Investment or Owner User
Total Lot Size:	72.80 AC
No. Lots:	1
Zoning Description:	C

73+/- Ac, Equus Lake Village in South FW

1201 McPherson Rd, Fort Worth, TX 76140

Location



73+/- Ac, Equus Lake Village in South FW

1201 McPherson Rd, Fort Worth, TX 76140

Property Photos



1. south to north oblique



2. west to east oblique

73+/- Ac, Equus Lake Village in South FW

1201 Mcpherson Rd, Fort Worth, TX 76140

Property Photos



3. north to south oblique

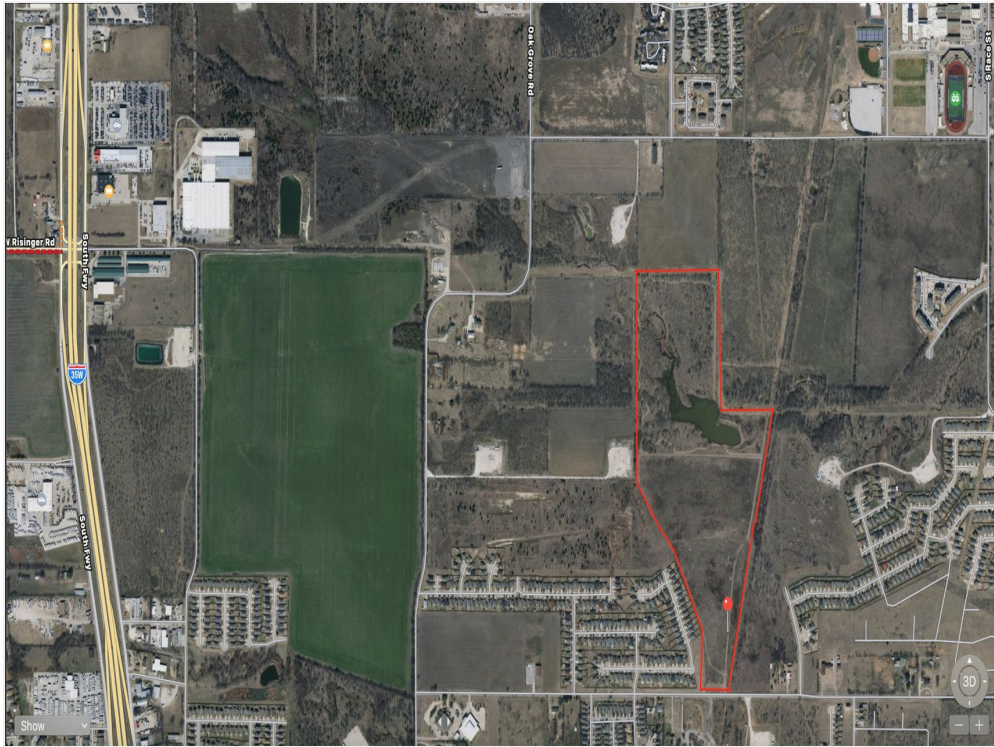


4. east to west oblique

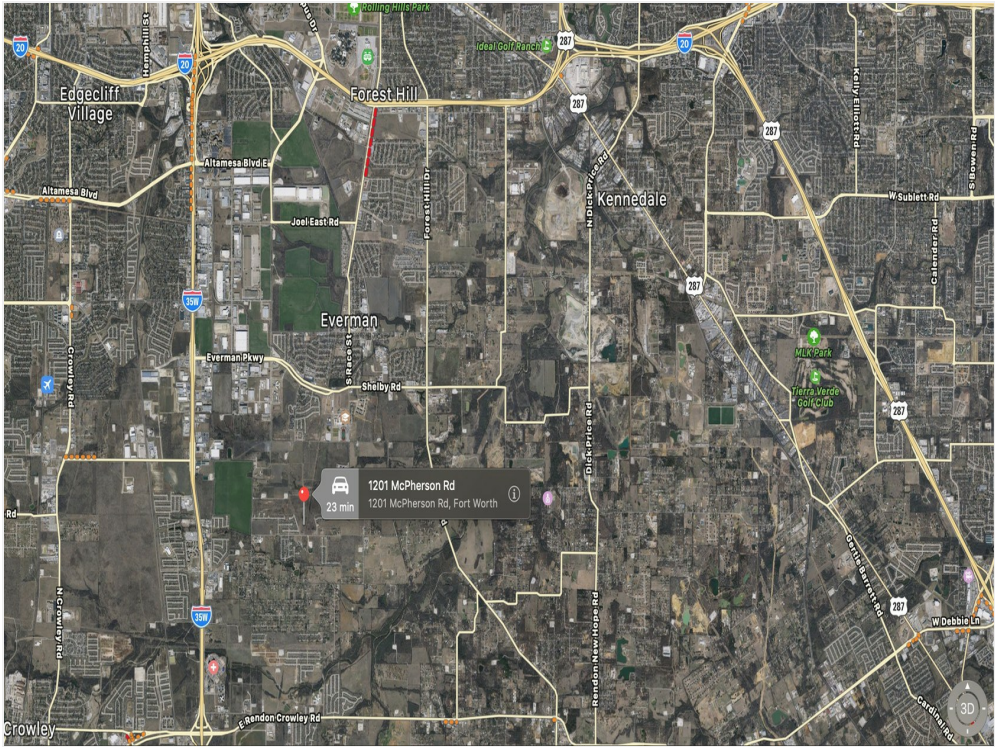
73+/- Ac, Equus Lake Village in South FW

1201 McPherson Rd, Fort Worth, TX 76140

Property Photos



Aerial w I35

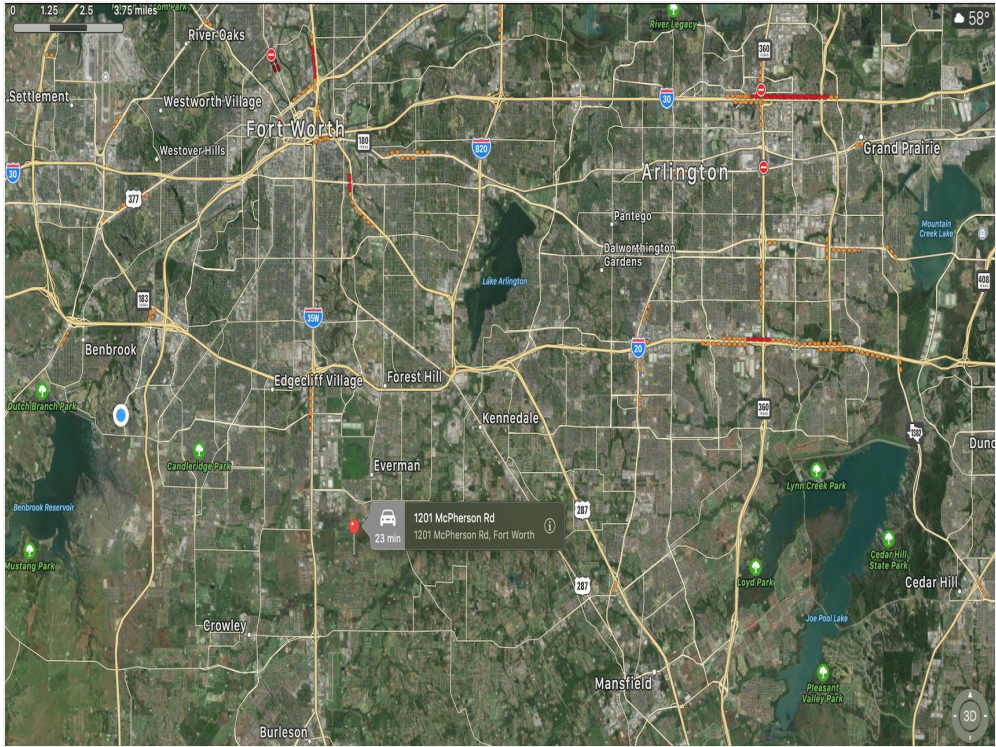


aerial, I35, I20 and 287

73+/- Ac, Equus Lake Village in South FW

1201 McPherson Rd, Fort Worth, TX 76140

Property Photos



aerial, FW, Arl, Grand Prairie

73+/- Ac, Equus Lake Village in South FW

1201 Mcpherson Rd, Fort Worth, TX 76140



Dawn Potthoff

dawngp@me.com

(817) 320-3473

**FirstLight Commercial
Real Estate**

Fort Worth, TX 76162

